



morelondon

Riverside, SE1

---

**3 MORE LONDON FORMS PART OF THE AWARD WINNING 13 ACRE FOSTER + PARTNERS' LED MASTER PLANNED MORE LONDON ESTATE. SET WITHIN A RIVERSIDE SETTING AND ENJOYING VIEWS OVER THE RIVER THAMES, POTTERS FIELDS PARK AND TOWER BRIDGE, THE AVAILABLE SPACE PROVIDES THE HIGHEST QUALITY OFFICE ACCOMMODATION.**

---

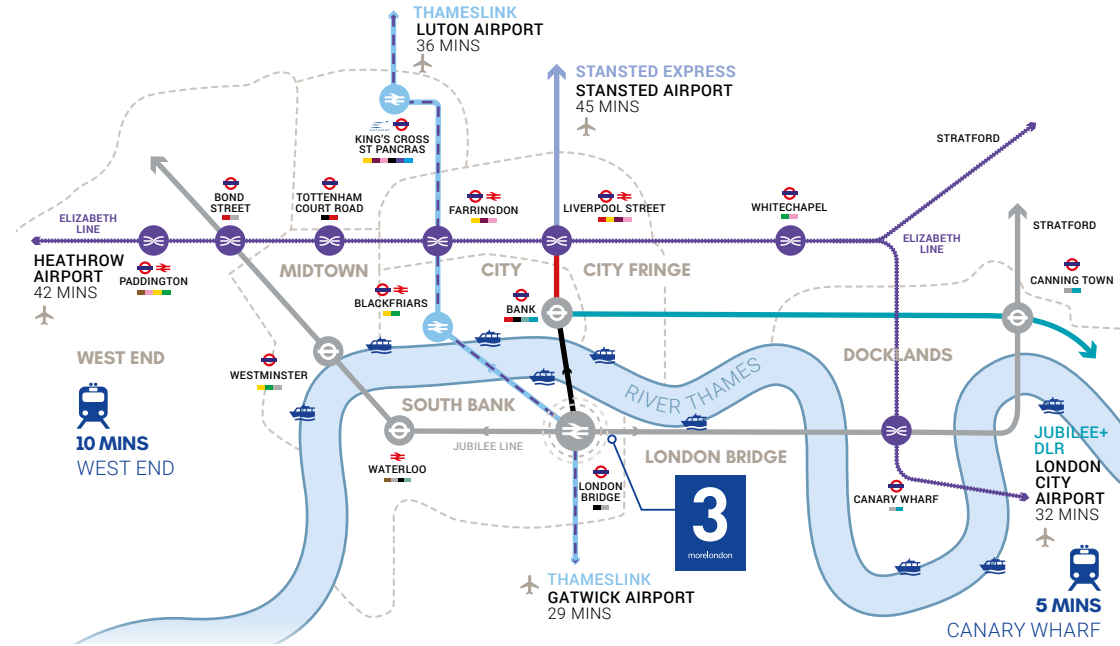


# 3

morelondon

## LOCATION & CONNECTIVITY

More London is located on the South Bank of the River Thames between London Bridge and Tower Bridge. The Estate is located only a few minutes' walk from London Bridge station and boasts an impressive list of occupiers, including Red Bull, PwC and EY, the latter two being their European Headquarters. More London is also the home to the Mayor of London with the GLA building situated adjacent to 3 More London Riverside.



# 3

morelondon

## SPECIFICATION & AMENITIES

### SPECIFICATION

The accommodation is finished to a Category A condition, to include:-

- Feature atrium reception
- Twin 4 pipe air conditioning
- New metal tile suspended ceilings
- New LED lighting
- 150mm raised floor
- Car parking
- Showers
- EPC rating: C
- Bike racks

### AMENITIES

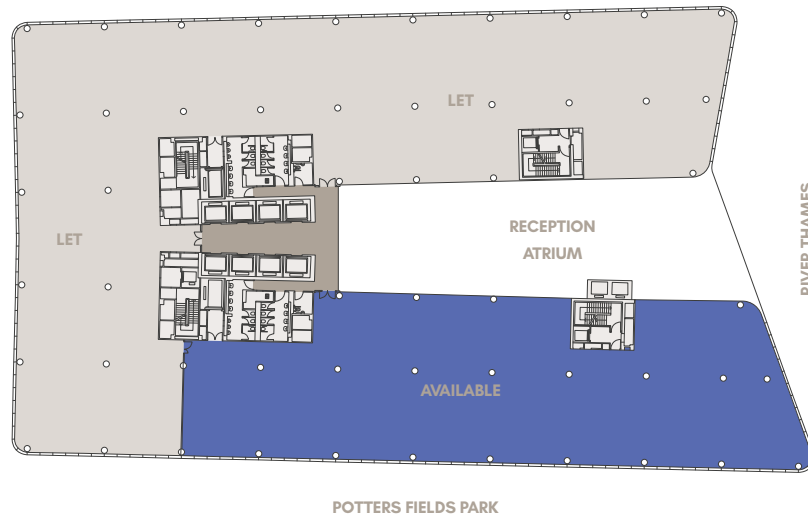
- Conferencing facilities at the Hilton Hotel
- The Scoop open air theatre
- Third Space - gym and health spa
- A Range of high quality bars, restaurants and cafes, including Strada, Gaucho, Jamie's Italian and Dim T
- 245 bed 4\* Hilton Hotel

### ACCOMMODATION (NIA)

FLOOR	SQ FT	SQ M
Part 2 <sup>nd</sup>	13,136	1,220.43

Subject to on site verification.

### PART 2<sup>ND</sup> FLOOR



Floor plan not to scale, for indicative purposes only.



## CONTACT

Rob Macnab  
020 7861 5354  
rob.macnab@knightfrank.com

Nick Codling  
020 7861 1274  
nick.codling@knightfrank.com



### Important Notice

1. Particulars: These particulars are not an offer or contract, nor part of one. You should not rely on statements by Knight Frank LLP in the particulars or by word of mouth or in writing ("Information") as being factually accurate about the property, its condition or its value. Neither Knight Frank LLP nor any joint agent has any authority to make any representations about the property, and accordingly any information given is entirely without responsibility on the part of the agents, seller(s) or lessor(s). 2. Photos etc: The photographs show only certain parts of the property as they appeared at the time they were taken. Areas, measurements and distances given are approximate only. 3. Regulations etc: Any reference to alterations to, or use of, any part of the property does not mean that any necessary planning, building regulations or other consent has been obtained. A buyer or lessee must find out by inspection or in other ways that these matters have been properly dealt with and that all information is correct. 4. VAT: The VAT position relating to the property may change without notice. Knight Frank LLP is a limited liability partnership registered in England with registered number OC305934.

Our registered office is 55 Baker Street, London W1U 8AN, where you may look at a list of members' names. September 2016.

Brochure designed and produced by SAENTYS +44 (0)20 7407 8717 | info@saentys.com | www.saentys.com